

동상교역
Tel:(02)2234-4178, Fax:(02)6008-1357
사업자등록번호:208-45-64609
415-020 경기도 김포시 금포로 1117-20
김포현대공구타운 가동 1층 25/26호

ACTEK HOIST RING
www.actek.co.kr
actek@actek.co.kr
Safe and Easy Lifting!!
Made in U.S.A.

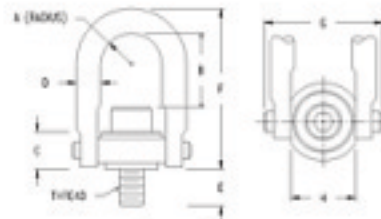
Stainless Steel Safety Hoist Rings

Check up to five results to perform an action.

- Actek swivel hoist rings are designed for lifting. They rotate and pivot to absorb any pitch, roll or sway of unbalanced loads. Will not yield to heavy side loads. Help prevent the lifting hook from disengaging.
- Safety Engineered. All loads lifted are especially important from a safety standpoint. Actek swivel hoist rings provide the kind of safety that protects men and material against accidents before they occur.
- For use in outdoor weather and certain chemical and corrosive environments.
- Material : 300 Series Stainless Steel.
- Safety Factor : 5:1.
- Liquid Penetrant MIL 6866.



[larger image](#)



[larger image](#)

Results 1 - 41 of 41

1

<u>Item #</u>	<u>Rated Load</u>	<u>Thread Size</u>	<u>Thread Protrusion (E)</u>	<u>B</u>	<u>Torque</u>
58102	400 lbs	5/16" - 18	0.29 in	1.27 in	3.5 ft/lb
58104	400 lbs	5/16" - 18	0.54 in	1.27 in	3.5 ft/lb
58106	500 lbs	3/8" - 16	0.54 in	1.27 in	6 ft/lb
58602	1250 lbs	1/2" - 13	1.07 in	1.84 in	14 ft/lb
58008	1250 lbs	1/2" - 13	0.78 in	2.31 in	14 ft/lb
58644	1250 lbs	1/2" - 13	0.78 in	4.25 in	14 ft/lb
58010	1250 lbs	1/2" - 13	1.03 in	2.31 in	14 ft/lb
58646	1250 lbs	1/2" - 13	1.03 in	4.25 in	14 ft/lb
58012	1250 lbs	1/2" - 13	1.28 in	2.31 in	14 ft/lb
58648	1250 lbs	1/2" - 13	1.28 in	4.25 in	14 ft/lb
58002	2000 lbs	5/8" - 11	0.78 in	2.18 in	30 ft/lb
58641	2000 lbs	5/8" - 11	0.78 in	4.12 in	30 ft/lb
58004	2000 lbs	5/8" - 11	1.03 in	2.18 in	30 ft/lb

<u>58640</u>	2000 lbs	5/8" - 11	1.03 in	4.12 in	30 ft/lb
<u>58006</u>	2000 lbs	5/8" - 11	1.28 in	2.18 in	30 ft/lb
<u>58642</u>	2000 lbs	5/8" - 11	1.28 in	4.12 in	30 ft/lb
<u>58014</u>	2500 lbs	3/4" - 10	1.03 in	2.06 in	50 ft/lb
<u>58650</u>	2500 lbs	3/4" - 10	1.03 in	4.00 in	50 ft/lb
<u>58018</u>	2500 lbs	3/4" - 10	1.53 in	2.06 in	50 ft/lb
<u>58654</u>	2500 lbs	3/4" - 10	1.53 in	4.00 in	50 ft/lb
<u>58204</u>	3500 lbs	3/4" - 10	1.04 in	3.06 in	50 ft/lb
<u>58658</u>	3500 lbs	3/4" - 10	1.04 in	4.65 in	50 ft/lb
<u>58206</u>	3500 lbs	3/4" - 10	1.54 in	3.06 in	50 ft/lb
<u>58660</u>	3500 lbs	3/4" - 10	1.54 in	4.65 in	50 ft/lb
<u>58202</u>	4000 lbs	7/8" - 9	1.04 in	2.93 in	80 ft/lb
<u>58656</u>	4000 lbs	7/8" - 9	1.04 in	4.52 in	80 ft/lb
<u>58203</u>	4000 lbs	7/8" - 9	1.29 in	2.93 in	80 ft/lb
<u>58652</u>	4000 lbs	7/8" - 9	1.29 in	4.52 in	80 ft/lb
<u>58210</u>	5000 lbs	1" - 8	1.29 in	2.81 in	115 ft/lb
<u>58662</u>	5000 lbs	1" - 8	1.29 in	4.40 in	115 ft/lb
<u>58212</u>	5000 lbs	1" - 8	1.54 in	2.81 in	115 ft/lb
<u>58664</u>	5000 lbs	1" - 8	1.54 in	4.40 in	115 ft/lb
<u>58214</u>	5000 lbs	1" - 8	2.29 in	2.81 in	115 ft/lb
<u>58666</u>	5000 lbs	1" - 8	2.29 in	4.40 in	115 ft/lb
<u>58802</u>	7500 lbs	1 1/4" - 7	1.89 in	4.12 in	235 ft/lb
<u>58404</u>	12000 lbs	1 1/2" - 6	2.70 in	6.41 in	400 ft/lb
<u>58400</u>	15000 lbs	2" - 4 1/2	2.96 in	5.91 in	400 ft/lb
<u>59002</u>	25000 lbs	2 1/2" - 8	4.00 in	8.03 in	1050 ft/lb
<u>59006</u>	25000 lbs	2 1/2" - 4	4.00 in	8.03 in	1050 ft/lb
<u>59200</u>	37500 lbs	3" - 4	5.00 in	8.48 in	2150 ft/lb
<u>59402</u>	50000 lbs	3 1/2" - 4	7.00 in	9.28 in	2550 ft/lb