

동상교역
Tel:(02)2234-4178, Fax:(02)6008-1357
사업자등록번호:208-45-64609
415-020 경기도 김포시 금포로 1117-20
김포현대공구타운 가동 1층 25/26호

ACTEK HOIST RING
www.actek.co.kr
actek@actek.co.kr
Safe and Easy Lifting!!
Made in U.S.A.

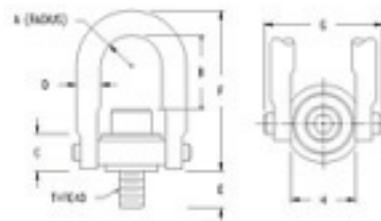
Metric Stainless Steel Safety Hoist Rings

Check up to five results to perform an action.

- Actek swivel hoist rings are designed for lifting. They rotate and pivot to absorb any pitch, roll or sway of unbalanced loads. Will not yield to heavy side loads. Help prevent the lifting hook from disengaging.
- Safety Engineered. All loads lifted are especially important from a safety standpoint. Actek swivel hoist rings provide the kind of safety that protects men and material against accidents before they occur.
- For use in outdoor weather and certain chemical and corrosive environments.
- Material : 300 Series Stainless Steel.
- Safety Factor : 5:1.
- Liquid Penetrant MIL 6866.



[larger image](#)



[larger image](#)

Results 1 - 21 of 21

1

<u>Item #</u>	<u>Rated Load</u>	<u>Thread Size</u>	<u>Thread Protrusion (E)</u>	<u>B</u>	<u>Torque</u>
58912	200 kg	M8 x 1.25	13 mm	32 mm	4 N·m
58916	250 kg	M10 x 1.50	18 mm	30 mm	8 N·m
58924	525 kg	M12 x 1.75	19 mm	60 mm	18 N·m
59124	525 kg	M12 x 1.75	19 mm	110 mm	18 N·m
58930	950 kg	M16 x 2.00	29 mm	56 mm	40 N·m
59130	950 kg	M16 x 2.00	29 mm	106 mm	40 N·m
58936	1075 kg	M20 x 2.50	34 mm	52 mm	68 N·m
59136	1075 kg	M20 x 2.50	34 mm	102 mm	68 N·m
58942	1500 kg	M20 x 2.50	32 mm	78 mm	68 N·m
59142	1500 kg	M20 x 2.50	32 mm	118 mm	68 N·m
58948	2100 kg	M24 x 3.00	37 mm	74 mm	108 N·m
59148	2100 kg	M24 x 3.00	37 mm	114 mm	108 N·m
58950	2100 kg	M30 x 3.50	58 mm	108 mm	108 N·m

<u>58956</u>	3500 kg	M30 x 3.50	42 mm	106 mm	318 N·m
<u>58958</u>	3500 kg	M30 x 3.50	62 mm	106 mm	318 N·m
<u>58966</u>	5500 kg	M36 x 4.00	64 mm	166 mm	542 N·m
<u>58968</u>	6250 kg	M42 x 4.50	82 mm	160 mm	542 N·m
<u>58970</u>	6750 kg	M48 x 5.00	82 mm	154 mm	542 N·m
<u>58972</u>	11150 kg	M64 x 6.00	101 mm	204 mm	1423 N·m
<u>58988</u>	15750 kg	M72 x 6.00	132 mm	220 mm	2915 N·m
<u>58990</u>	22300 kg	M90 x 6.00	177 mm	235 mm	3459 N·m

Results1 - 21 of 21